

The Clearest Choice

Face ID 5 Series

Hybrid Face Recognition Access Device

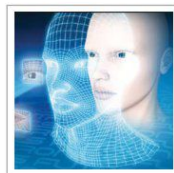
Face ID 5 series unveils three latest face and palm verification terminals with upgraded functions of light-proof and advanced optical technology. These devices set a new standard for FingerTec in addressing customers' previous product concerns and present a new timely manner in facilitating the detection process from all light sources. Invest in a device with varieties of proven features while obtaining high efficiency and accuracy of identity verification. Choose Face ID 5 series, the clearest choice of face recognition system around.



Face ID 5 FTD



Face ID 5



Latest AI Face Recognition Technology
Embedded with the ultimate light-proof function technology to verify faces successfully even in a variety of light conditions.



Verify with Mask On
Verifies a face even with a mask on for better safety; the feature is optional yet crucial amid the pandemic.



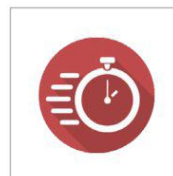
A Safer Choice
Touch-less face verification technology provides greater convenience and better protection against cross-contamination.



Anti-Spoofing Checks
The technology has been improved with better security configuration to prevent crimes and spoofing attempts.

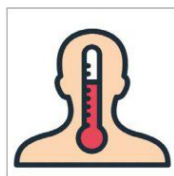


Large Capacity
Stores up to 6,000 face templates, 6,000 fingerprint templates, 3,000 palm templates and up to 200,000 transaction logs.



Speedy Verification
Accurate verifications in seconds, an essential feature for door access to ensure smooth people flow.

**Face ID 5 FTD has the fastest verification performance*



***Fever Detection**
Configure temperature threshold for easy detection of high body temperature to exclude the potential risk of contagious disease transmission and deny access immediately.



Efficient Data Processing
Integrated with Ingress software, the bundled solution with door access and time attendance solution in one single system.



Temperature module sensor 12-month warranty



**The features are available in Face ID 5 FTD only.*

WEB LINK

Product
<https://product.fingertec.com/userguide.php>

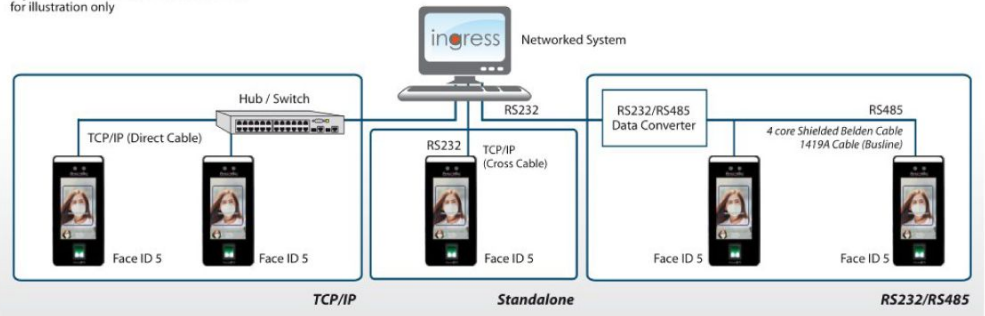
- Quick Start Guide
- Installation Guide
- User Guide
- Video Guide
- Technical Tips

Ingress Software
<https://product.fingertec.com/userguide.php>

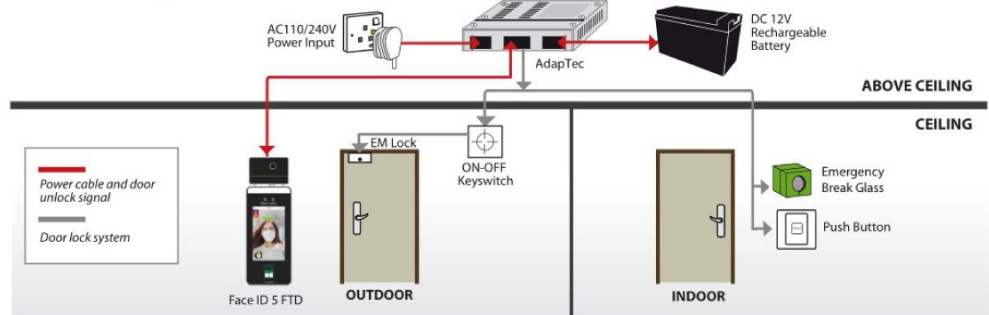
LAYOUT PLAN

System Communication

for illustration only



Installation Diagram



SPECIFICATIONS

MODEL	Face ID 5 FTD*	Face ID 5
SURFACE FINISHING	Glass with aluminium frame	
TYPE OF SCANNER	2 MP WDR low light camera & High resolution fingerprint scanner	
MICROPROCESSOR	900 MHz dual core CPU	
MEMORY	512MB RAM, 8G flash	
ALGORITHM	Face: BioBridge VX 5.8, Fingerprint: BioBridge VX 10.0, Palm: BioBridge VM 12.0	
PUSH TECHNOLOGY	Yes	Yes
DIMENSION (L x W x H), mm	92 x 23 x 262	92 x 23 x 203
STORAGE		
Face templates	6,000	6,000
Fingerprint templates	6,000	6,000
Palm templates	3,000	3,000
Card templates	N/A	10000
Transactions	200,000	200,000
ENROLLMENT & VERIFICATION		
Methods	Face (1:1, 1:N), Fingerprint (1:1, 1:N), Palm (1:N) & Password	Face (1:N), Fingerprint (1:1, 1:N), Palm (1:N), Card & Password
Verification time (sec)	Fingerprint: <1s, Face: <2s, Palm: <0.35s	
CARD TECHNOLOGY		
RFID: 64-bit, 125kHz, RF output power (EN300-330)	Made to order	Yes
MIFARE: MF1S50/S70, 13.56MHz	Made to order	Made to order
COMMUNICATIONS		
Method	TCP/IP, RS485, WiFi (Optional)	
Wiegand	Input/Output	
OPERATING ENVIRONMENT		
Temperature (°C)	16~32	0~45
Humidity (%)	10~90	10~90
Power Input	DC 12V 3A	
MULTIMEDIA		
Display	5" 65k color TFT touch screen panel	
Photo-ID	Yes	
ACCESS CONTROL		
Lock relay output	Yes	
Alarm output/auxiliary input	Yes	
Exit button/door sensor	Yes	
PREVENTIVE MEASURES		
Mask detection	Yes	
Fever detection	Yes	N/A
Fever measurement distance (cm)	30 - 50	N/A
Fever detection speed	>0.3s	N/A
Temperature measurement range (°C)	34 ~ 45	N/A
Temperature measurement accuracy (°C)	+/- 0.3	N/A
VOICE/ DISPLAY LANGUAGE (TERMINAL)	English (Standard) Other languages are available upon request.	

NOTE: Specifications are subject to change. Check <http://product.fingertec.com> for latest product information.



1 Packaging (Face ID5FTD)
 Dimension (mm) : 298 (L) x 123 (W) x 225 (H)
 Weight : 1.60 kg

2 Packaging (Face ID5)
 Dimension (mm) : 245 (L) x 90 (W) x 225 (H)
 Weight : 1.44kg



timeTec
www.timeteccloud.com
 TimeTec © 2021, All Rights Reserved

Authorized Reseller:

GENERAL AUTOMATION LTD.
 Automation & Communication Since 1991

Corporate Office: Shah Palace, Apt #C-1 (1st Floor), 5/1 Mohonpur Road, Adabor, Dhaka-1207. Tel: +88-02-41022433-34, +88-02-41022461, info@ga-limited.com
 Web: www.ga-limited.com

Sales Hot Line # 01730066010

Service Hot Line # 01970066060